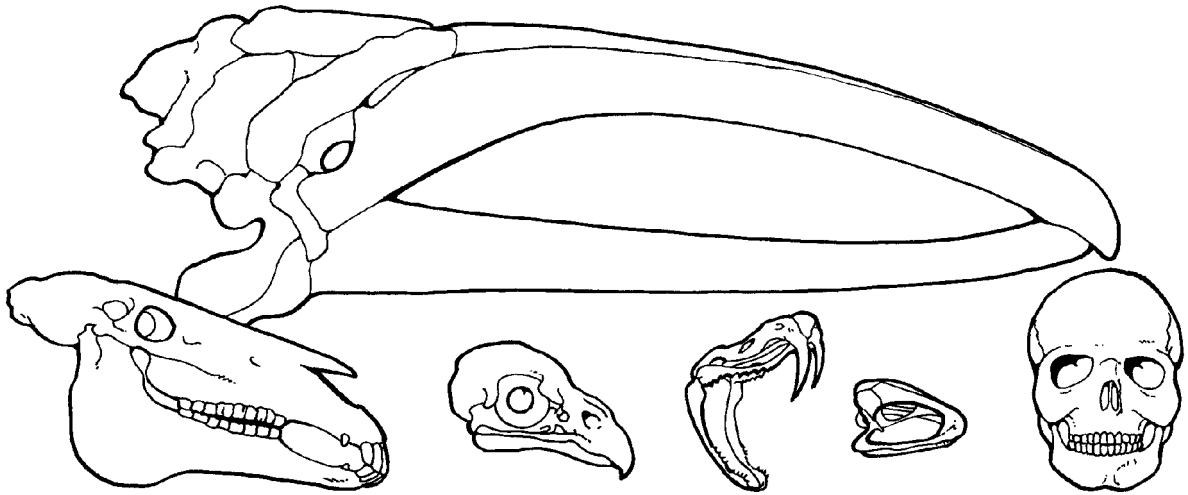


LEVELED READER • J

ANIMAL SKELETONS

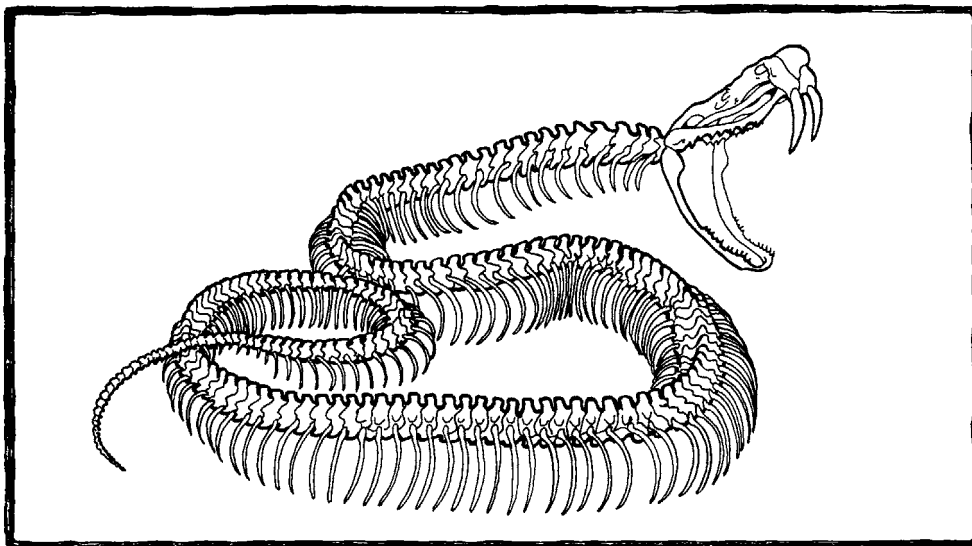


Written by Kira Freed • Illustrated by Cende Hill

www.readinga-z.com

Animal Skeletons

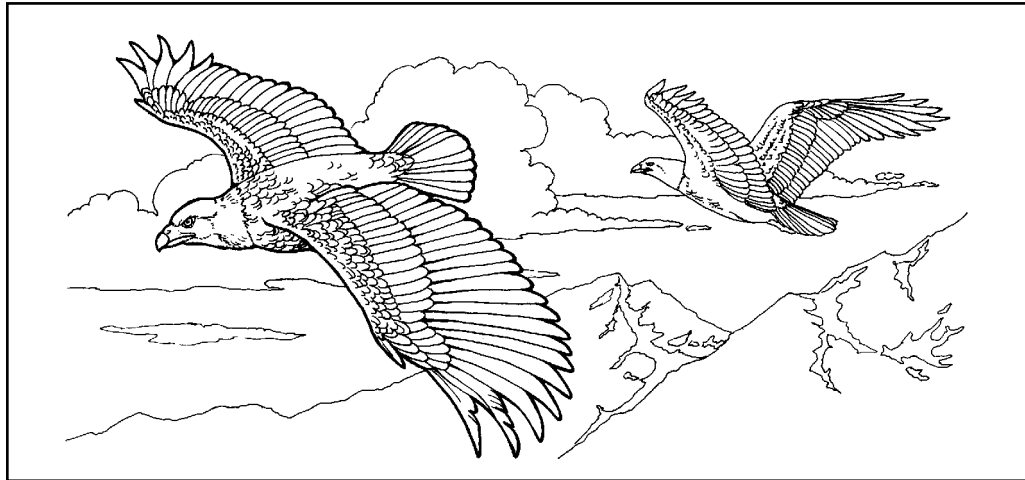
A Reading A-Z Level J Leveled Reader • Word Count: 400



 Reading a-z

Visit www.readinga-z.com for thousands of books and materials.

ANIMAL SKELETONS



Written by Kira Freed
 Illustrated by Cende Hill

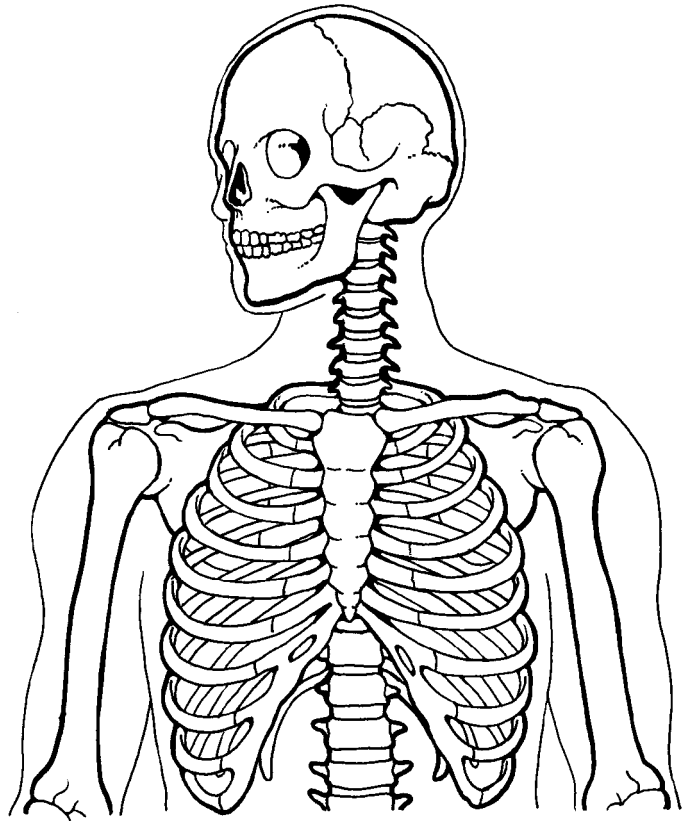
www.readinga-z.com

| | |
|----|-------------------|
| 16 | DRA |
| 16 | Reading Recovery |
| 1 | Fountas & Pinnell |

LEVEL J
Correlation

Animal Skeletons
 Level J leveled Reader
 © 2002 Learning Page, Inc.
 Written by Kira Freed
 Illustrated by Cende Hill
 ReadingA-Z™
 © Learning Page, Inc.
 All rights reserved.
 Learning Page
 1630 E. River Road #121
 Tucson, AZ 85718
www.readinga-z.com

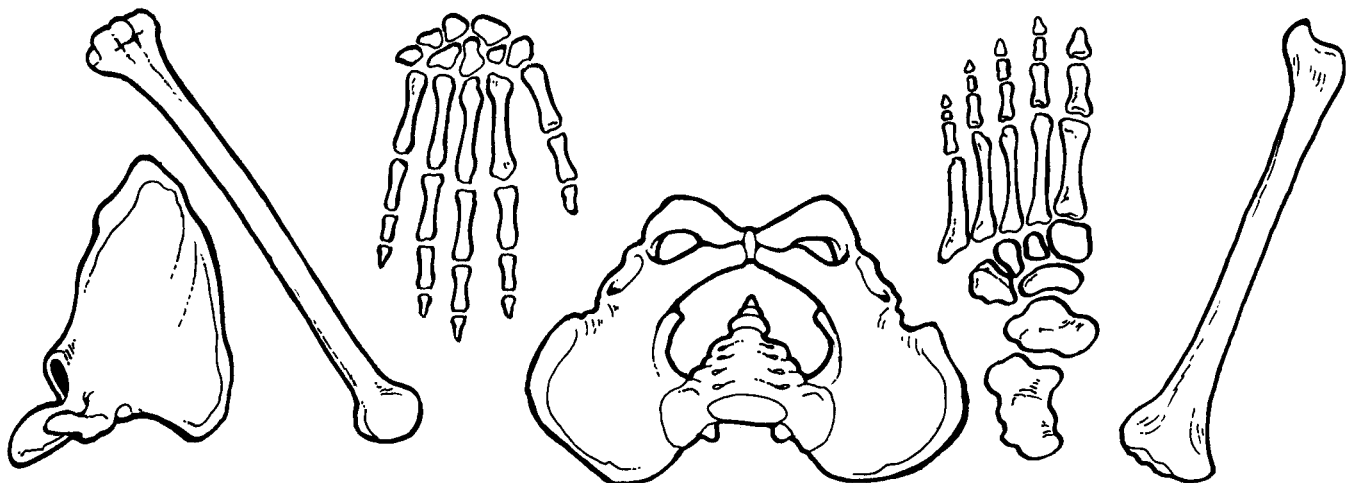
The bones in your body make up your skeleton. You have 206 of them. Bones give your body shape and support. They keep the soft parts inside you safe.

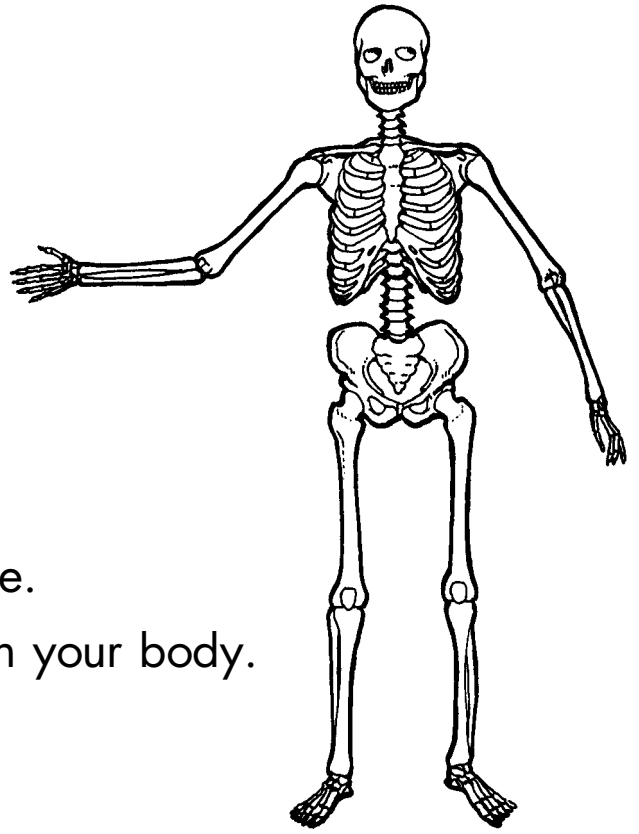


3

Bones come in many shapes and sizes. Your arms and legs are long bones. Your pelvis and shoulder blades are flat bones. The bones in your wrists, hands, ankles, and feet are small.

4



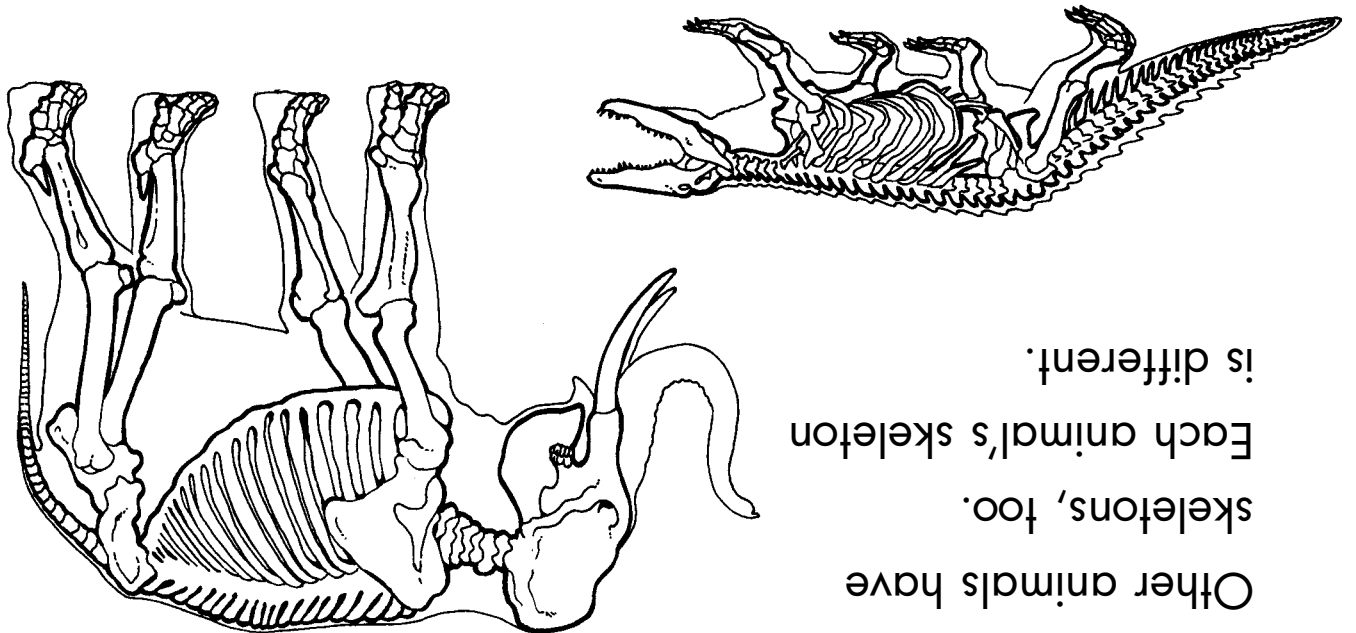


This is what your skeleton looks like.
Look at the many kinds of bones in your body.

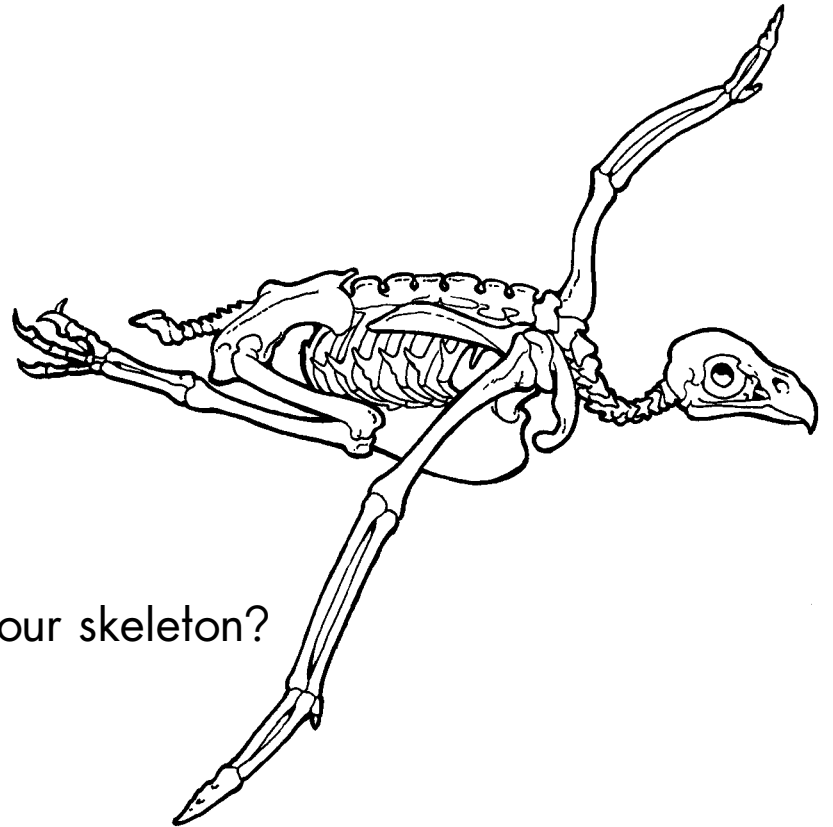
5

Some are short, some are tall,
some are light, and some are strong.

6



Other animals have
skeletons, too.
Each animal's skeleton
is different.



Look at this skeleton.

How is it different from your skeleton?

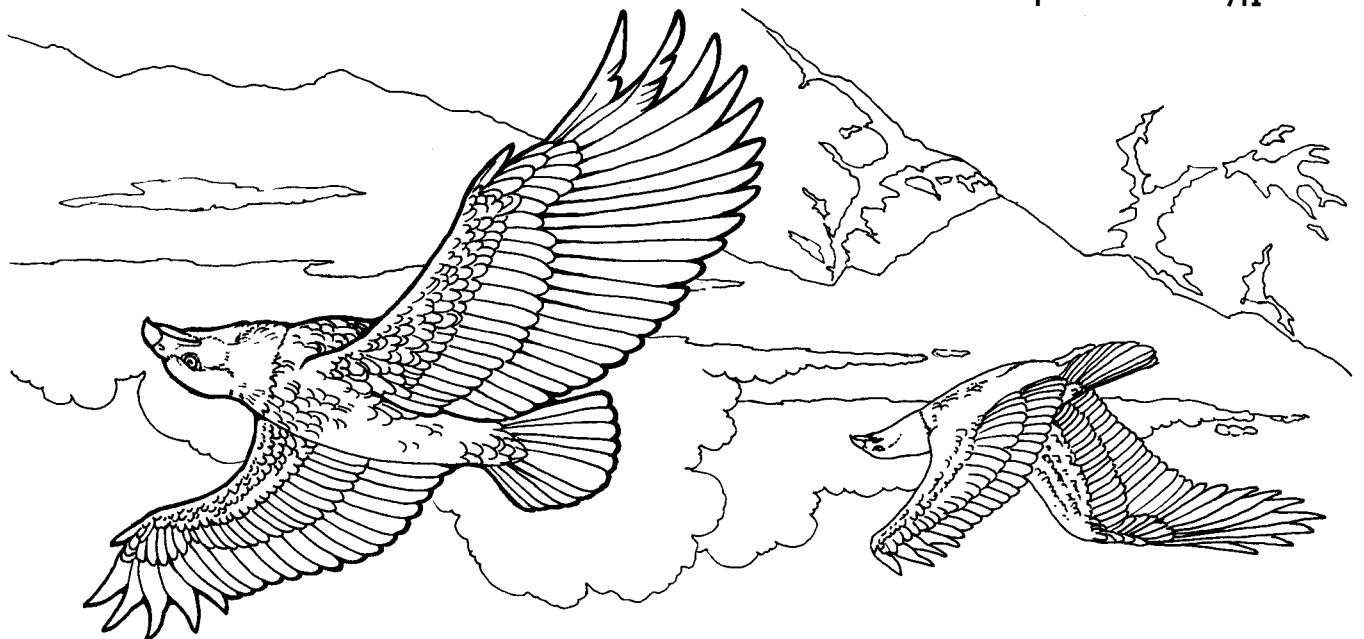
Do you know what it is?

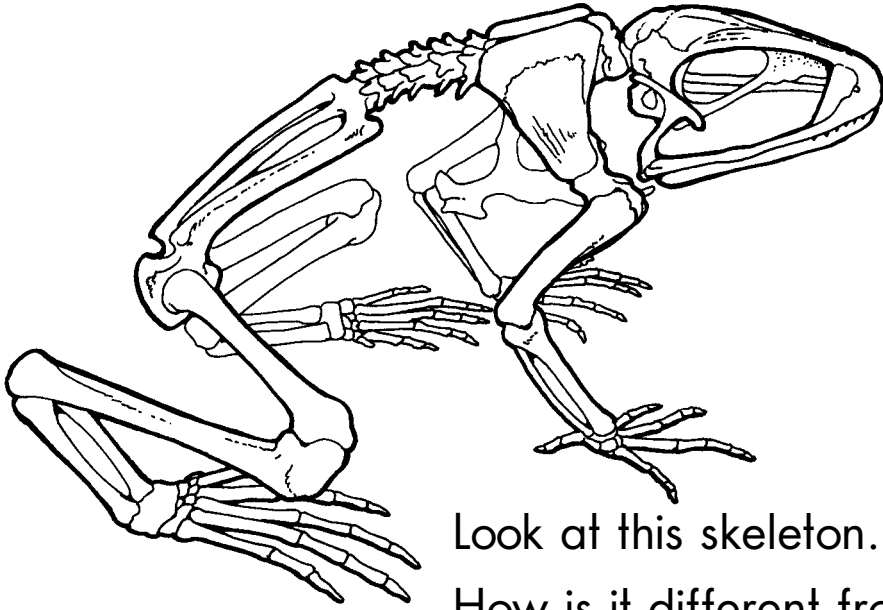
CLUE: This animal flies.

7

8

It's an eagle.
Its bones are hollow and light.
Wing feathers attach to the wing bones.





Look at this skeleton.

How is it different from your skeleton?

Do you know what it is?

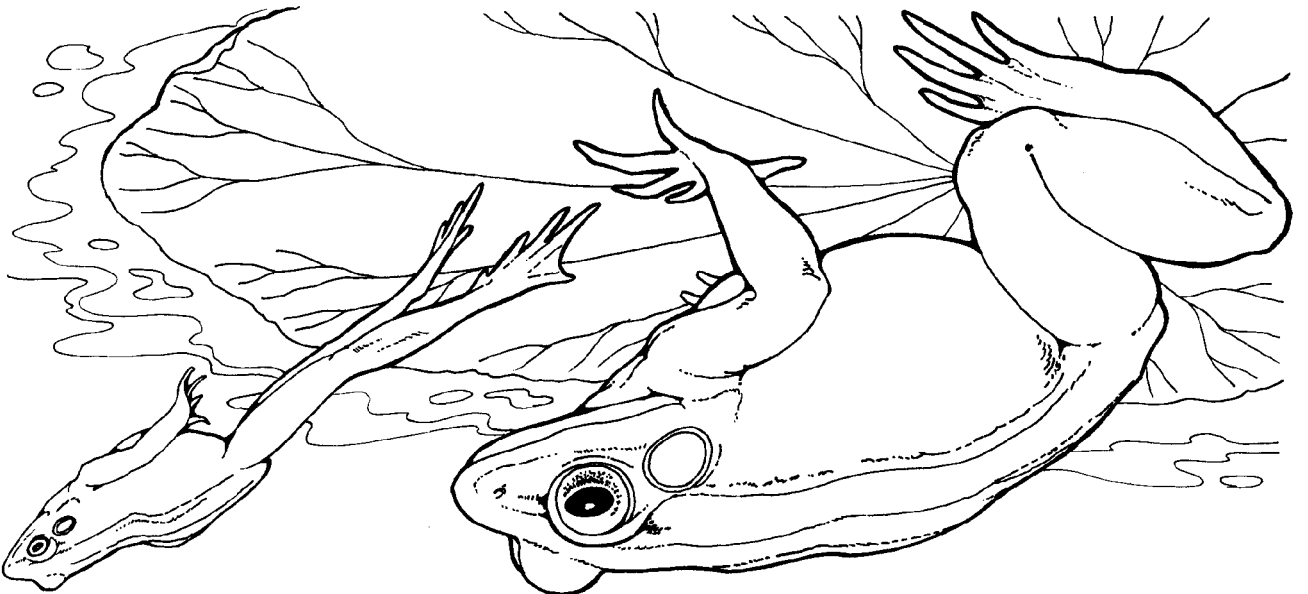
CLUE: This animal hops.

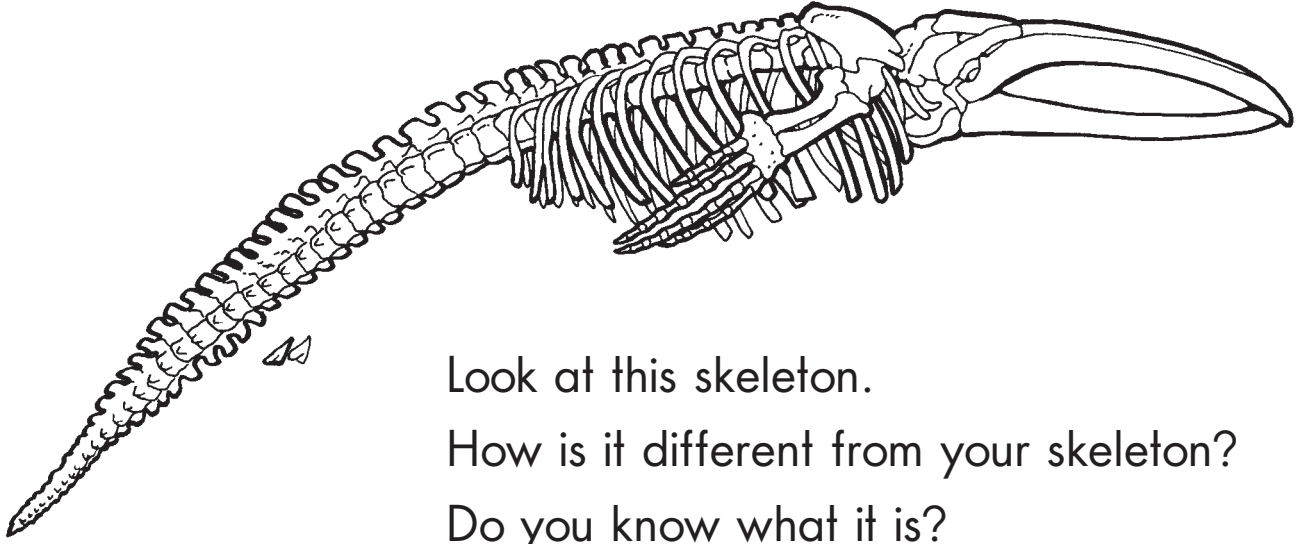
9

10

It has long back legs for hopping.
Its back legs are longer than its body.

It's a frog.





Look at this skeleton.

How is it different from your skeleton?

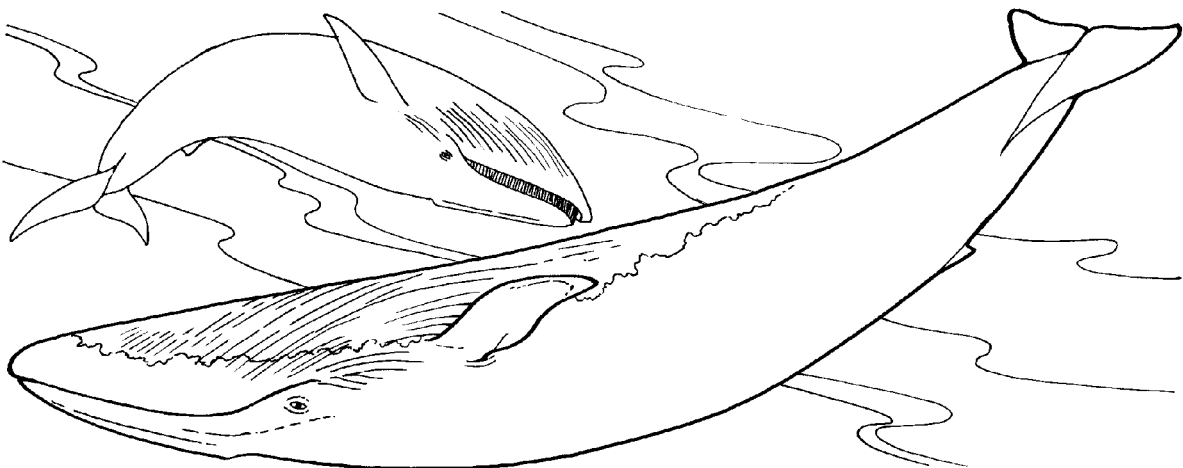
Do you know what it is?

CLUE: This animal swims.

11

12

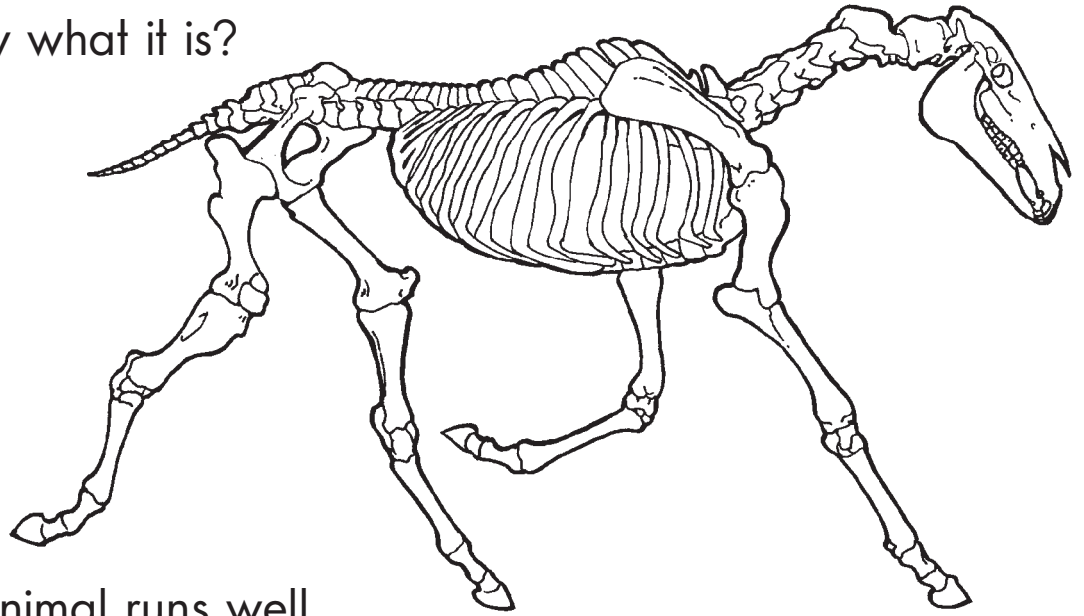
It's a blue whale.
It has no leg bones. Its arms are flippers.
Whales are supported by the water.
If a whale lived on land,
its skeleton would have to be much stronger.



Look at this skeleton.

How is it different from your skeleton?

Do you know what it is?



CLUE: This animal runs well.

13

It's a horse.
It has long legs for running.
A horse has a large rib cage to keep its large lungs safe.
It needs large lungs to take in lots of air when it runs.

14

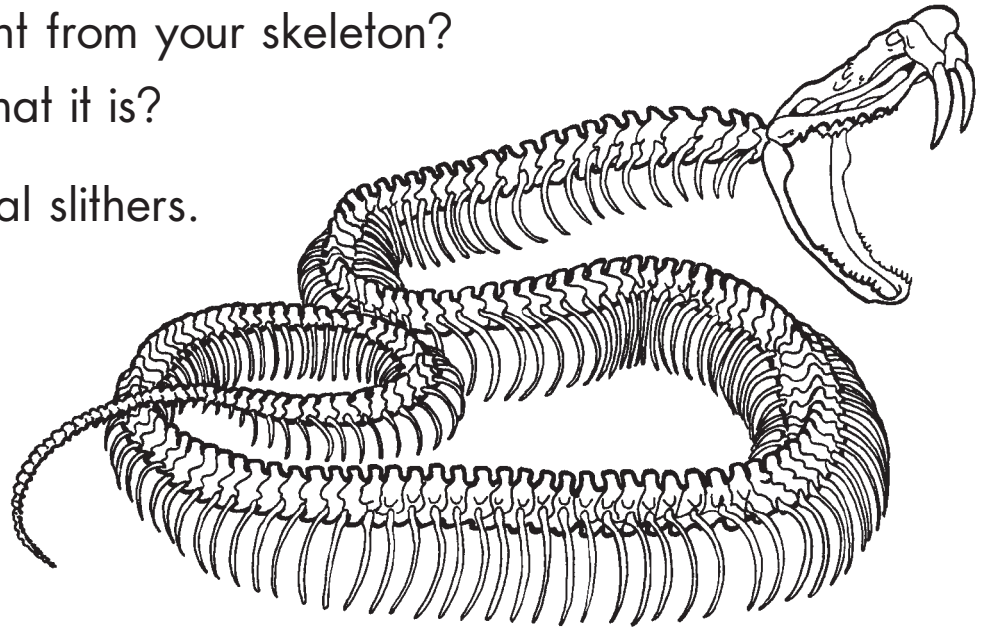


Look at this skeleton.

How is it different from your skeleton?

Do you know what it is?

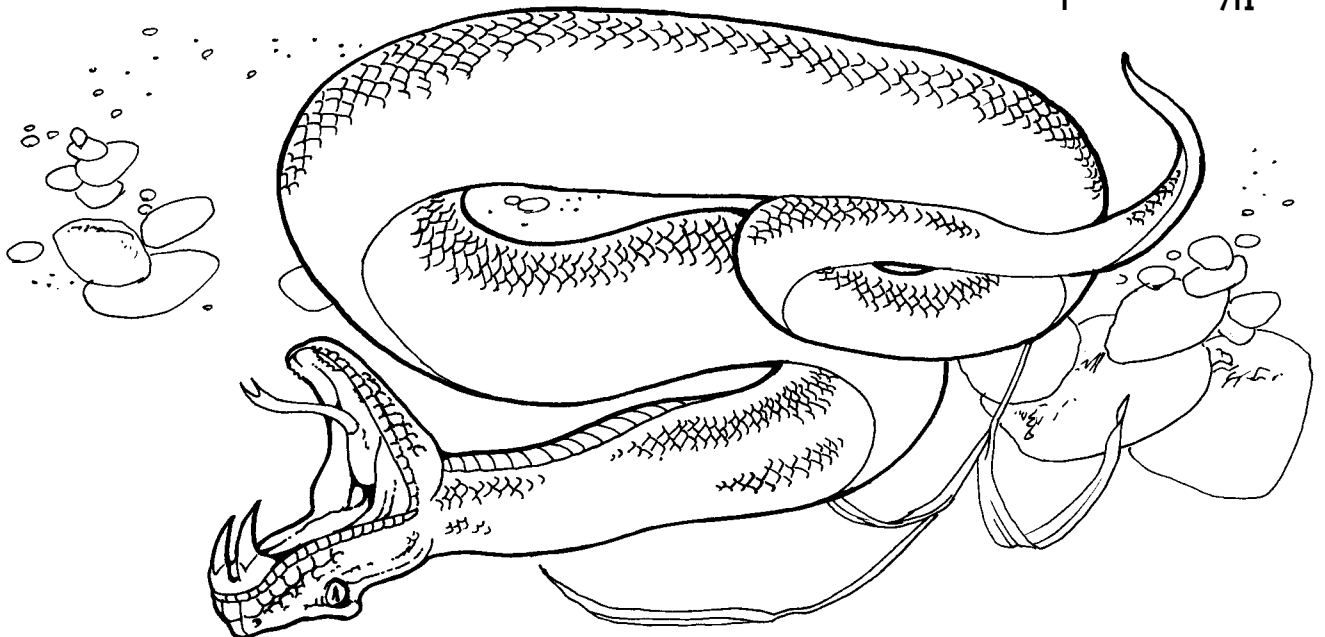
CLUE: This animal slithers.

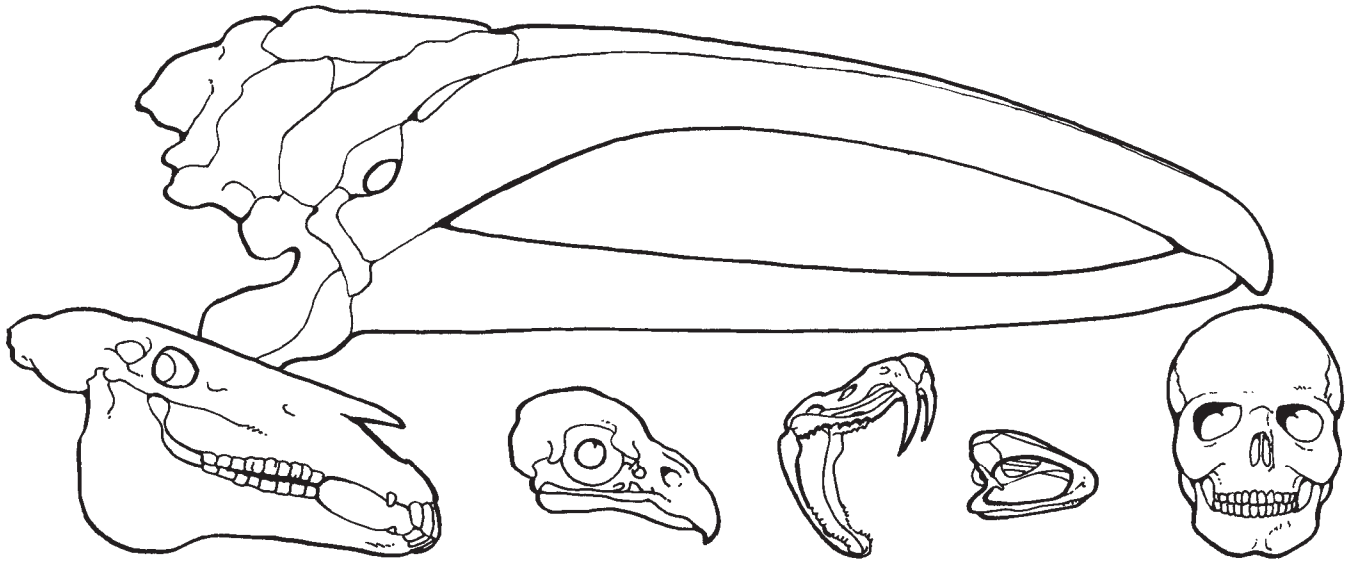


15

16

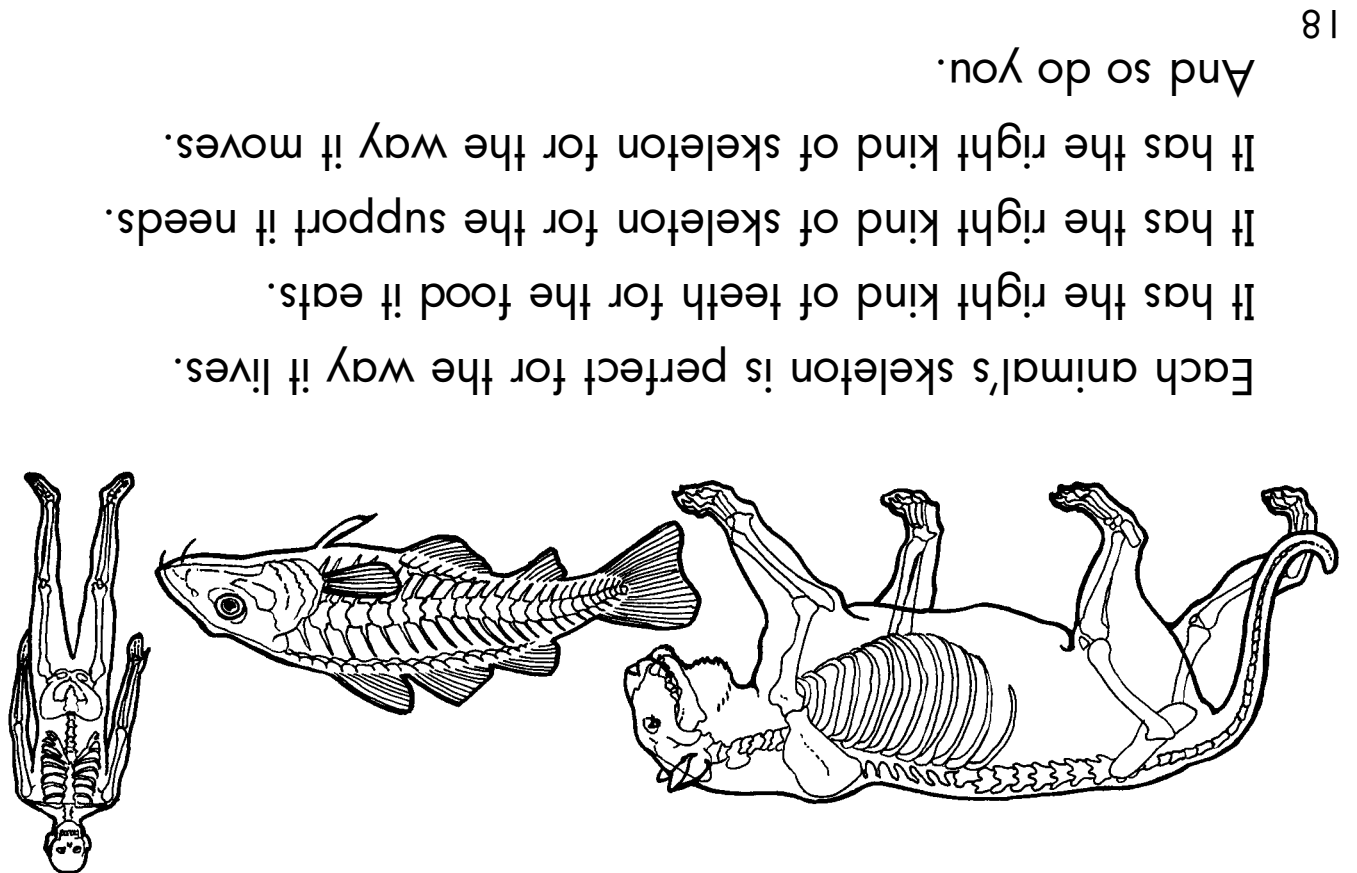
It's a snake.
It has no arms or legs.
Its skeleton is one long backbone with ribs.





Look at these skulls, or head bones.
 These are the skulls of the animals in this book.
 Look at how their shapes and parts are different.

17



Each animal's skeleton is perfect for the way it lives.
 It has the right kind of teeth for the food it eats.
 It has the right kind of skeleton for the support it needs.
 It has the right kind of skeleton for the way it moves.
 And so do you.

18